



# VIVID

199

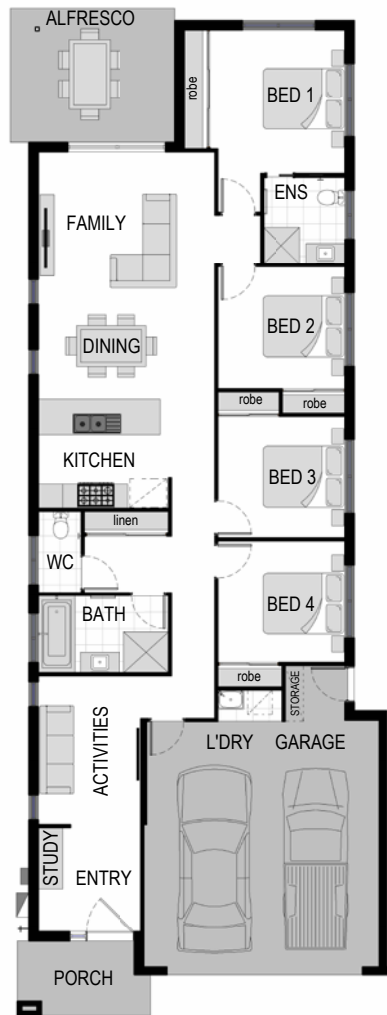
4 | 2 | 2 | 2

Vivid boasts clean lines with a minimalist designed facade. A cleverly designed four bedroom house plan to suit a narrow piece of land.

## We want you to love your home.

The Zaleta team are here to work with you to design the home you've always dreamt of.

Our plans are here as a guide, and modifying them to suit your lifestyle is all included as part of our service, at no extra cost.



SSF0002-10-P0002-A

SUITS  
10m  
LOT  
WIDTH

### HOME AREA

Width 9.45m  
Length 24.92m  
Gross Area 199.12m<sup>2</sup>

### ROOM DIMENSIONS

Bed 1	3.53 x 3.32m	Family	3.00 x 4.34m
Bed 2	3.00 x 3.13m	Dining	3.07 x 4.34m
Bed 3	3.00 x 3.13m	Alfresco	3.45 x 3.59m
Bed 4	3.00 x 3.13m	Garage	5.74 x 6.04m
Activities	3.67 x 2.60m		

Please note this document, including plans, materials and inclusions is for illustrative purposes only and is provided as a guide. Plans may not be drawn to scale.

# ZALETA