

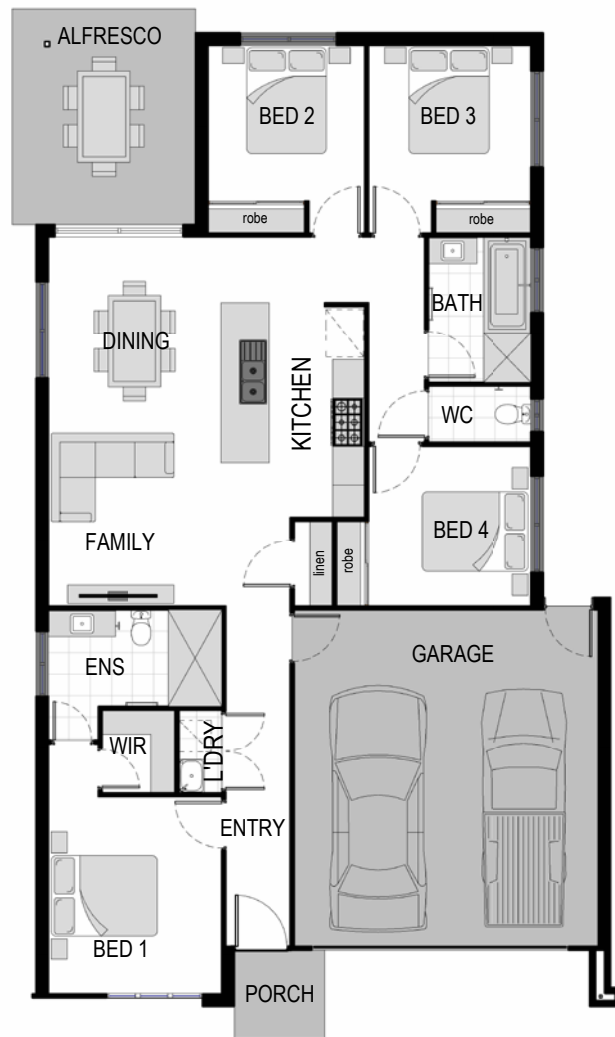


# OASIS

177

4 | 2 | 2 | 1

The Oasis facade harmoniously blends contemporary and coastal design elements. The interior plan offers four bedrooms and an open plan kitchen living space.



We want you to love your home.

The Zaleta team are here to work with you to design the home you've always dreamt of.

Our plans are here as a guide, and modifying them to suit your lifestyle is all included as part of our service, at no extra cost.



SUITS  
12.5m  
LOT  
WIDTH

SSF0013-12.5-P0001-A

## HOME AREA

Width 11.20m  
Length 18.40m  
Gross Area 177.16m<sup>2</sup>

## ROOM DIMENSIONS

Bed 1	3.10 x 3.70m	Family	4.40 x 2.40m
Bed 2	3.00 x 3.00m	Dining	4.40 x 2.40m
Bed 3	2.90 x 3.00m	Alfresco	3.20 x 4.00m
Bed 4	3.00 x 3.00m	Garage	6.60 x 5.70m

Please note this document, including plans, materials and inclusions is for illustrative purposes only and is provided as a guide. Plans may not be drawn to scale.

# ZALETA