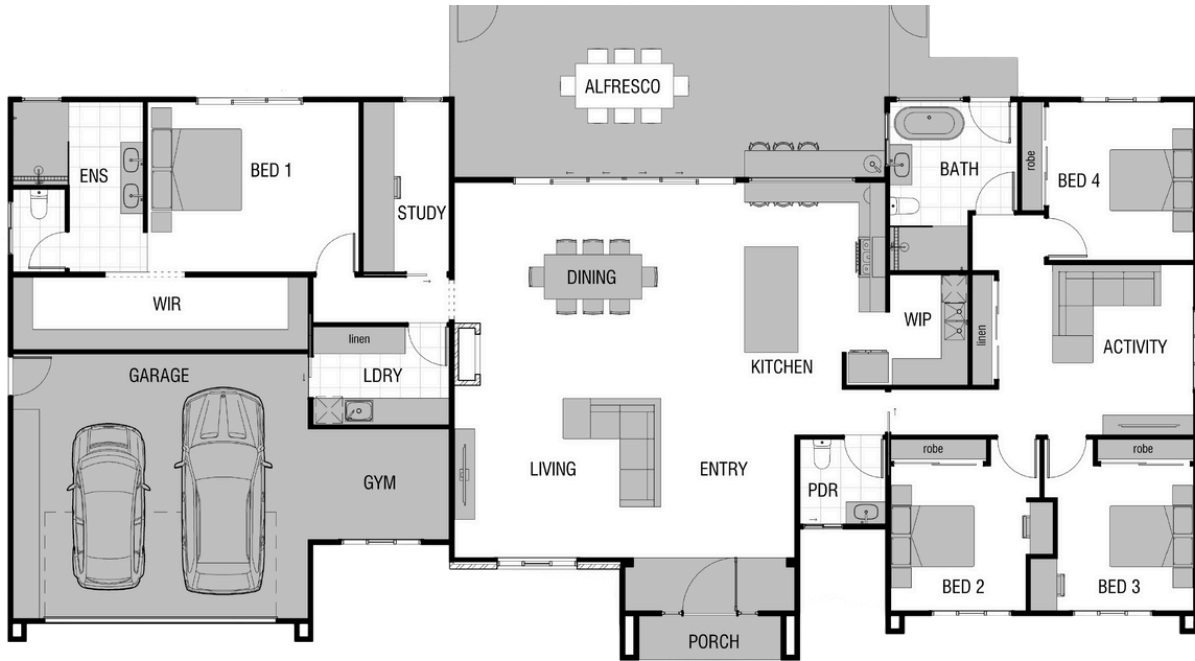


ROMEK 326



- 🛏️ 4
- 🍷 2.5
- 🚗 2
- 🛋️ 2
- 🏃 1
- 📖 1

Inspired by Nordic farmhouse design, The Romek combines warmth and simplicity with modern elegance. Featuring a brick-clad fireplace, an expansive alfresco area, and a private parent wing, it's designed for seamless indoor-outdoor living.

We want you to love your home.

The Zaleta team are here to work with you to design the home you've always dreamt of. Our plans are here as a guide, modifying them to suit your lifestyle is all included as part of our service.



hello@zaletagroup.com.au
www.zaletagroup.com.au

**SUITS
ACREAGE
LOT**

HOME AREA

Width 27 M
Lenth 12 M
Gross Area 326 M²

ROOM DIMENSIONS

Bed 1	4.7 x 3.8	Living	4 x 5
Bed 2	3 x 3.8	Activity	4 x 3.3
Bed 3	3 x 3.8	Dining	4 x 5
Bed 4	3.2 x 3.5	Kitchen	4 x 4.7
Garage	6.7 x 6	Alfresco	9.7 x 4
Study	2 x 3.8		

ZALETA